

**PLYCO**...leading the way  
to **BETTER** sliding door  
systems for farm and  
industrial buildings!

# **PLY-TRAC**

Sliding Door Track  
and Hardware

- **VERSATILE**  
offers you a choice of  
mounting brackets for  
various applications
- **SAVES INVENTORY \$\$\$**  
stock only one track,  
and with the option  
track brackets, build any  
style sliding door

- **Made of Heavy Duty  
14 Gauge Steel**

Call our offices for more information 1-800-558-5895

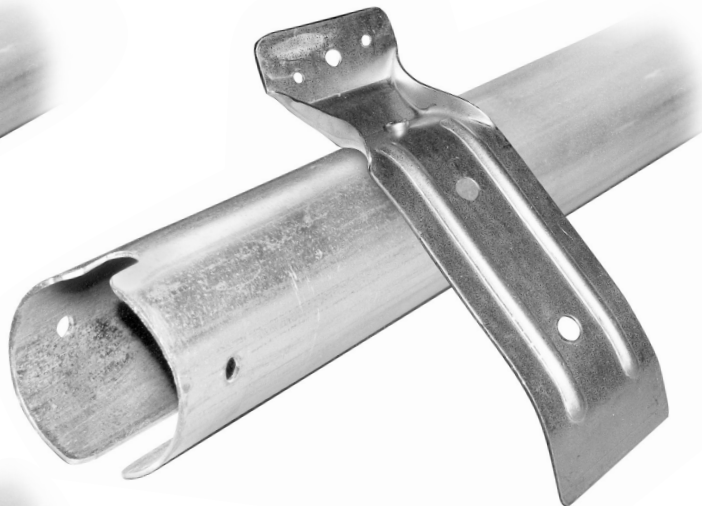
**PLYCO**  
CORPORATION

Elkhart Lake, WI 53020

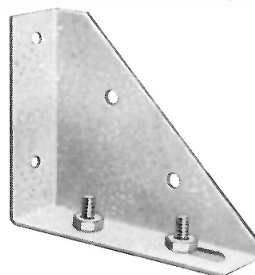
USA 800-558-5895  
INTERNATIONAL 920-876-3611  
Fax 800-257-5926 Fax 920-876-3527



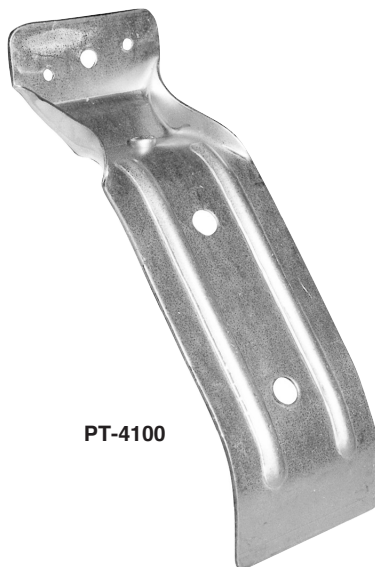
NOS. PT-1081  
THRU PT-1202  
(Brackets shipped seperately)



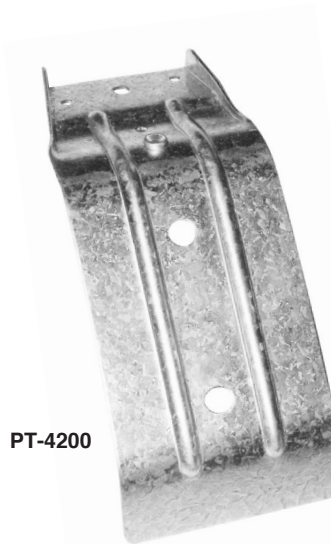
119300



# **PLY-TRAC** **ACCESSORIES** **& HARDWARE**



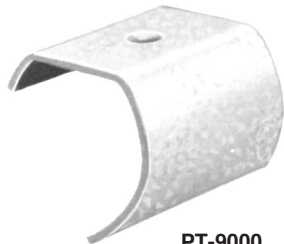
PT-4100



PT-4200



131000



PT-9000



PT-4000



PT-4796

Due to Plyco Corporation's ongoing commitment to product improvement, we reserve the right to change, without notice, product specifications, availability.

**PLYCO**  
CORPORATION  
PO BOX 386 • ELKHART LAKE, WI 53020

**www.plyco.com 800/558-5895 FAX: 800/257-5926**  
**INTERNATIONAL 920/876-3611 FAX: 920/876-3527**

**WINDOWS • WALK DOORS • WALL VENTS • RIDGE VENTS**  
**SLIDING DOOR TRACK • SLIDE DOOR RAILS • PLY-FOIL INSULATION**  
**HORSE STALLS • FASTENERS & CLOSURES • SPECIALTY PRODUCTS**